

Instruction Sheet For Roof Guardian

Roof Guardian Kit Includes These Pieces*;

72"
60 - 1/4" Bolts
60 - 1/4" Nuts
120 - 1/4" washers
5 - Rods w/ hitch pins
2 - angled side pieces w/ legs
2 - angled side pieces w/o legs
10 - flat stock
12 - 2" angle pieces for bottom support

60"
40 - 1/4" Bolts
40 - 1/4" Nuts
80 - 1/4" washers
4 - Rods w/ hitch pins
2 - angled side pieces w/ legs
2 - angled side pieces w/o legs
8 - flat stock
10 - 2" angle pieces for bottom support

48"
16 - 1/4" Bolts
16 - 1/4" Nuts
32 - 1/4" washers
4 - Rods w/ hitch pins
2 - angled side pieces w/ legs
2 - angled side pieces w/o legs
6 - flat stock
8 - 2" angle pieces for bottom support

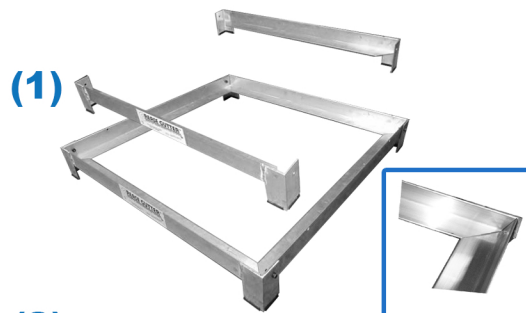


*Parts count will vary
for custom ordered
sizes

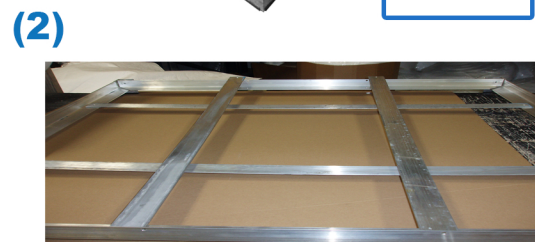
Pre-Installation

Make sure there are no obstructions that will be in the way of the mounting area on the fan or duct such as electric boxes, conduits, brackets, etc.

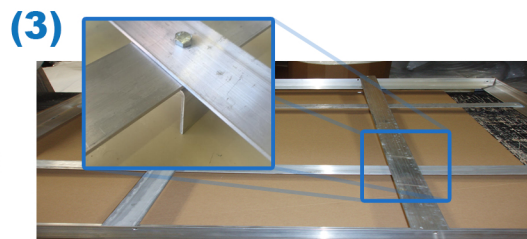
1) Attach the two angled pieces with the legs with the two angled pieces that do not have legs to form the perimeter of the box. Use the supplied 1/4" nut/bolt/washers combination to attach them. Place the box in the desired position around the fan and then bolt the final corner together.



2) Situate the lower arms around the fan so that there are no obstacles in the way and they are in a position to hold the filters. Using a 1/4" drill bit (not supplied), drill a hole into the bottom of the angled pieces so that the flat stock will attach. Use the supplied 1/4" nut/bolt/washer combination to fasten lower arms to the angled stock.



3) Attach the supplied leg supports wherever you see fit in an effort to support the system most effectively.



See reverse side for filter installation instructions.