

Instruction Sheet For Access Armor

Model
AA9x12UL
AA9x36UL
AA12x15UL
AA15x18UL
AA23x23UL

Size
9 in by 12 in.
9 in by 36 in.
12 in by 15 in.
15 in by 18 in.
23 in by 23 in.

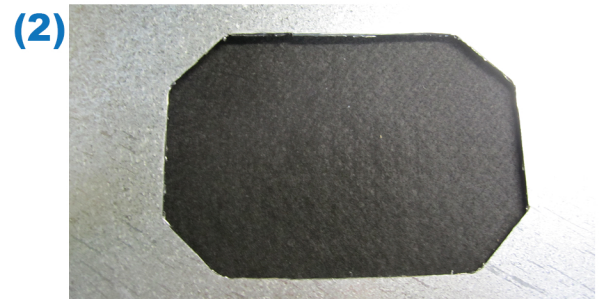
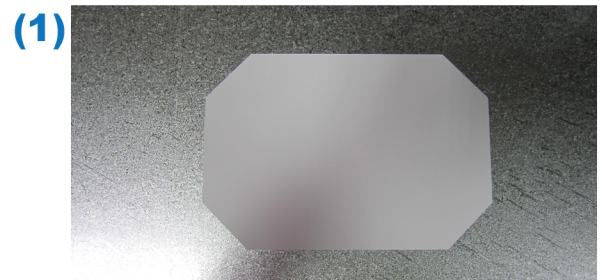
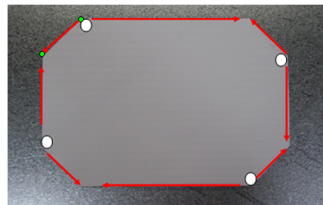
Pre-Installation

Make sure there are no obstructions that will be in the way of the mounting area on the duct such as electric boxes, conduits, brackets, etc.

1) Remove backing from the supplied template and place on duct in desired location.

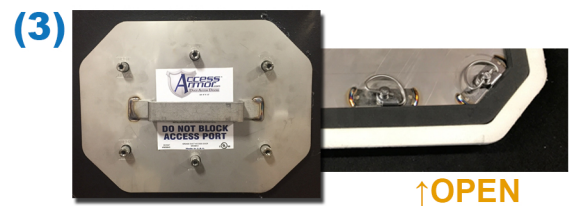
2) Closely cut duct around the perimeter of template and remove portion of duct. We recommend using a small jig-saw blade #30076 or conventional sheet metal nibbler.

You may want to drill a pilot hole in the 4 corners to make cutting easier.



3) Center and place Access Armor Duct Door into opening, being sure that all D-ring fasteners are in the "open"/counter-clockwise position.

Note: De-burring perimeter of duct opening is recommended to ensure proper fitting for access door and to reduce risk of injury.



↑ OPEN

4) Once in place, turn fasteners clockwise to compress Access Armor Door to duct, creating an air tight seal. This completes your installation.



↓ CLOSED